

NEW JERSEY DEPARTMENT OF CORRECTIONS

Gary M. Lanigan, Commissioner



OFFENDER CHARACTERISTICS REPORT

ON JANUARY 2, 2013

Office of Policy and Planning
January 2013

INTRODUCTION

This report has been developed to provide information regarding offender characteristics in each correctional complex, major institution, and satellite housing-unit under the jurisdiction of the New Jersey Department of Corrections on January 2, 2013. The selected characteristics compiled in this report are Base Offense at Admission, Total Term at Admission, Ethnicity, Age, County of Commitment, and Mandatory Minimum Term.

The Prison Complex includes, New Jersey State Prison, Central Reception and Assignment Facility, East Jersey State Prison, Bayside State Prison, Mid-State Correctional Facility, Southern State Correctional Facility, Northern State Prison, South Woods State Prison, Edna Mahan Correctional Facility for Women and the Adult Diagnostic and Treatment Center (ADTC), a facility for adult male sex offenders.

NOTE: In the data tables, separate subtotals are provided for ADTC and Edna Mahan Correctional Facility for Women due to the interest in these unique populations. The remainder of the Prison Complex is labeled "Male Offenders in Other Facilities".

The Youth Correctional Complex consists of Garden State Youth Correctional Facility, Albert C. Wagner Youth Correctional Facility and Mountainview Youth Correctional Facility.

"Halfway Houses, County Jails, St. Francis" include state-sentenced inmates housed in halfway houses, county jails, and Central Medical Unit (St. Francis Hospital).

"Not Coded" are records for offenders in the correctional system for whom admission characteristics data had not been entered into the computerized information system as of January 2, 2013.

HIGHLIGHTS

- *Fifty-six percent (56%) of all New Jersey Department of Corrections inmates were committed for crimes against persons which include Homicide, Sexual Assault, Aggravated/Simple Assault, Robbery, Kidnapping, Other Sex Offenses and Other Person Offenses.*
- *Twenty percent (20%) of all Department of Corrections inmates have been committed for narcotics law violations, including possession, sale and distribution. Eighty-three percent (83%) of all narcotics law violations are sale/distribution offenses.*
- *The median total term for Department of Corrections' inmates is 6 years.*
- *Thirty-five percent (35%) of all New Jersey Department of Corrections inmates were committed with total terms of 10 years or more. Of the total, five percent (5%) are serving Life Sentences with parole eligibility, and 68 offenders are serving Life Sentences without parole.*
- *Seventy-three percent (73%) of New Jersey Department of Corrections inmates housed in the State System have sentences that include mandatory minimum terms.*
- *Thirty-seven percent (37%) of all inmates in the New Jersey Department of Corrections are 30 years of age or younger. The median age for inmates in all facilities is 34.*
- *Sixty-one percent (61%) of New Jersey Department of Corrections' inmates are Black, while 23% are White and 16% are Hispanic.*
- *Of the 21 New Jersey counties, ten (Atlantic, Bergen, Camden, Essex, Hudson, Mercer, Middlesex, Monmouth, Passaic and Union) account for 78% of Total Department of Corrections inmates. Essex County is the highest contributor with 15%.*

NOTES

DUE TO SOFTWARE AND ROUNDING:

- **WORKSHEET ROW AND COLUMN TOTALS DO NOT ALWAYS EQUAL 100 PERCENT.**
- **PIE CHART PERCENTAGES DO NOT ALWAYS EQUAL 100%.**
- **PIE CHART PERCENTAGES MAY DIFFER SLIGHTLY FROM WORKSHEET PERCENTAGES.**
- **ACCOMPANYING NARRATIVES REFLECT PIE CHART PERCENTAGES.**

TOTAL INMATES IN NEW JERSEY STATE CORRECTIONAL INSTITUTIONS AND SATELLITE UNITS

TOTAL INMATES		23,123
PRISON COMPLEX	16,433	YOUTH COMPLEX
ADTC	611	GARDEN STATE TOTAL
Bayside – Main	1,162	MOUNTAINVIEW TOTAL
Bayside – Farm	684	Wagner – Main
Bayside – Ancora	345	Wagner – Ad Seg
BAYSIDE TOTAL	2,191	Wagner – Minimum Units
CRAF – Jones Farm	282	WAGNER TOTAL
CRAF – Reception	642	HALFWAY HOUSES, COUNTY JAILS, ST. FRANCIS
CRAF TOTAL	924	Halfway Houses
East Jersey – Main	1,378	County Jails
East Jersey – Camp	113	Central Medical Unit (St. Francis)
EAST JERSEY TOTAL	1,491	
EDNA MAHAN TOTAL	783	
MIDSTATE TOTAL	685	
NJ STATE PRISON TOTAL	1,860	
Northern State – Main	1,886	
Northern State – Ad Seg Male	536	
NORTHERN STATE TOTAL	2,422	
SOUTHERN STATE TOTAL	2,042	
SOUTH WOODS TOTAL	3,424	

TABLE OF CONTENTS

<u>REPORT NAME</u>	<u>PAGE</u>
<i>OFFENDERS IN NEW JERSEY CORRECTIONAL INSTITUTIONS BY BASE OFFENSE</i>	7
<i>Prison Complex Offenders</i>	8-11
<i>Youth Complex Offenders</i>	12
<i>Offenders in Halfway Houses, County Jails and St. Francis Hospital</i>	13
<i>OFFENDERS IN NEW JERSEY CORRECTIONAL INSTITUTIONS BY TOTAL TERM AT ADMISSION</i>	14
<i>Prison Complex Offenders</i>	15-18
<i>Youth Complex Offenders</i>	19
<i>Offenders in Halfway Houses, County Jails and St. Francis Hospital</i>	20
<i>OFFENDERS IN NEW JERSEY CORRECTIONAL INSTITUTIONS BY MANDATORY MINIMUM TERM</i>	21
<i>Prison Complex Offenders</i>	22-25
<i>Youth Complex Offenders</i>	26
<i>Offenders in Halfway Houses, County Jails and St. Francis Hospital</i>	27
<i>OFFENDERS IN NEW JERSEY CORRECTIONAL INSTITUTIONS BY AGE</i>	28
<i>Prison Complex Offenders</i>	29-32
<i>Youth Complex Offenders</i>	33
<i>Offenders in Halfway Houses, County Jails and St. Francis Hospital</i>	34
<i>OFFENDERS IN NEW JERSEY CORRECTIONAL INSTITUTIONS BY ETHNIC IDENTIFICATION</i>	35
<i>Prison Complex Offenders</i>	36-39
<i>Youth Complex Offenders</i>	40
<i>Offenders in Halfway Houses, County Jails and St. Francis Hospital</i>	41
<i>OFFENDERS IN NEW JERSEY CORRECTIONAL INSTITUTIONS BY COUNTY OF COMMITMENT</i>	42
<i>Prison Complex Offenders</i>	43-46
<i>Youth Complex Offenders</i>	47
<i>Offenders in Halfway Houses, County Jails and St. Francis Hospital</i>	48

BASE OFFENSE

**OFFENDERS IN NEW JERSEY CORRECTIONAL INSTITUTIONS
ON JANUARY 2, 2013, BY BASE OFFENSE**

In these tabulations, the base offense is the most serious offense at the time of admission. These figures reflect base or controlling offenses at admission only and do not include any offenses in addition to the base offense in the case of multiple sentences at admission. Additional sentences imposed following initial admission to the state correctional system are not included in these data.

- Violent offenses include homicide, sexual assault, aggravated and simple assault, robbery, kidnapping, other sex offenses and other person offenses (i.e. terroristic threats, coercion, larceny from a person, death by auto and negligent manslaughter).
- Property offenses include burglary, arson, theft, forgery, embezzlement, and receiving / possessing stolen property.
- Public policy offenses include racketeering, gambling, corruption, perjury, escape, bail jumping, juvenile and family related offenses, and conspiracy.
- Weapons offenses include weapon possession and operation.
- Drug violations include distribution, manufacture, possession, and use of drugs. Virtually all drug offenses are for sale and distribution rather than for mere possession.

OFFENDERS IN CORRECTIONAL INSTITUTIONS BY BASE OFFENSE

Base Offense	Total		Male Offenders in Other Facilities		Youth Complex		ADTC		Edna Mahan		*Halfway Houses, County Jails, St. Francis	
	#	%	#	%	#	%	#	%	#	%	#	%
TOTAL OFFENDERS	23,123	100%	15,039	100%	3,873	100%	611	100%	783	100%	2,817	100%
Violent Offenses	12,893	56%	9,202	61%	2,022	52%	608	100%	450	57%	611	22%
Property Offenses	2,408	10%	1,559	10%	370	10%	0	0%	106	14%	373	13%
Public Policy	926	4%	596	4%	178	5%	1	0%	30	4%	121	4%
Weapons	2,145	9%	977	6%	689	18%	0	0%	19	2%	460	16%
Drugs	4,578	20%	2,687	18%	614	16%	2	0%	136	17%	1,139	40%
Not Coded	173	1%	18	0%	0	0%	0	0%	42	5%	113	4%

- Inmates with violent offenses comprise 61% of Male Offenders in Other Facilities, 52% of the Youth Complex, 100% of ADTC, 57% of Edna Mahan, and 22% of Halfway Houses, County Jails, and St. Francis.
- * Halfway Houses, County Jails, and Central Medical Unit (Saint Francis Hospital).

Prison Complex Offenders By Base Offense

Institution	Total	Violent Offenses	Homicide	Sexual Assault	Assault	Robbery	Kidnap	Other Sex	Other Person	Property	Public Policy	Weapons	Drugs	Not Coded
Bayside Main	1,162 100%	546 47%	99 9%	24 2%	144 12%	250 22%	3 0%	20 2%	6 1%	166 14%	55 5%	118 10%	277 24%	0 0%
Bayside Farm	684 100%	352 51%	102 15%	0 0%	96 14%	148 22%	2 0%	2 0%	2 0%	95 14%	32 5%	57 8%	148 22%	0 0%
Bayside Ancora	345 100%	104 30%	18 5%	0 0%	27 8%	57 17%	0 0%	2 1%	0 0%	54 16%	25 7%	39 11%	123 36%	0 0%
Bayside Total	2,191 100%	1002 46%	219 10%	24 1%	267 12%	455 21%	5 0%	24 1%	8 0%	315 14%	112 5%	214 10%	548 25%	0 0%
CRAF Jones Farm	282 100%	15 5%	6 2%	0 0%	7 2%	2 1%	0 0%	0 0%	0 0%	110 39%	25 9%	0 0%	132 47%	0 0%
CRAF Reception	642 100%	231 36%	23 4%	28 4%	59 9%	77 12%	3 0%	39 6%	2 0%	119 19%	35 5%	65 10%	188 29%	4 1%
CRAF Total	924 100%	246 27%	29 3%	28 3%	66 7%	79 9%	3 0%	39 4%	2 0%	229 25%	60 6%	65 7%	320 35%	4 0%
East Jersey Main	1,378 100%	1,215 88%	641 47%	80 6%	65 5%	370 27%	52 4%	3 0%	4 0%	30 2%	16 1%	33 2%	84 6%	0 0%
East Jersey Camp	113 100%	47 42%	1 1%	0 0%	7 6%	38 34%	0 0%	1 1%	0 0%	20 18%	4 4%	9 8%	33 29%	0 0%
East Jersey Total	1,491 100%	1,262 85%	642 43%	80 5%	72 5%	408 27%	52 3%	4 0%	4 0%	50 3%	20 1%	42 3%	117 8%	0 0%

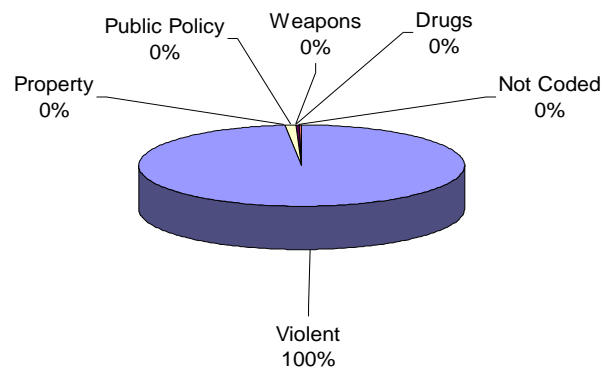
Prison Complex Offenders By Base Offense

Institution	Total	Violent Offenses	Homicide	Sexual Assault	Assault	Robbery	Kidnap	Other Sex	Other Person	Property	Public Policy	Weapons	Drugs	Not Coded
Midstate	685 100%	387 56%	22 3%	121 18%	69 10%	43 6%	7 1%	112 16%	13 2%	112 16%	33 5%	36 5%	117 17%	0 0%
NJ State Prison	1,860 100%	1,680 90%	1,144 62%	94 5%	65 3%	306 16%	58 3%	4 0%	9 0%	37 2%	30 2%	31 2%	69 4%	13 1%
Northern Main	1,886 100%	1,291 68%	427 23%	134 7%	180 10%	482 26%	38 2%	25 1%	5 0%	156 8%	87 5%	101 5%	251 13%	0 0%
Northern Ad Seg Male	536 100%	282 53%	60 11%	12 2%	57 11%	141 26%	1 0%	7 1%	4 1%	60 11%	33 6%	56 10%	105 20%	0 0%
Northern Total	2,422 100%	1,573 65%	487 20%	146 6%	237 10%	623 26%	39 2%	32 1%	9 0%	216 9%	120 5%	157 6%	356 15%	0 0%
Southern	2,042 100%	741 36%	84 4%	46 2%	241 12%	314 15%	7 0%	42 2%	7 0%	326 16%	101 5%	228 11%	646 32%	0 0%
South Woods	3,424 100%	2,311 67%	674 20%	341 10%	330 10%	779 23%	62 2%	104 3%	21 1%	274 8%	120 4%	204 6%	514 15%	1 0%
Subtotal Male Offenders in Other Facilities	15,039 100%	9,202 61%	3,301 22%	880 6%	1,347 9%	3,007 20%	233 2%	361 2%	73 0%	1,559 10%	596 4%	977 6%	2,687 18%	18 0%

Prison Complex Offenders By Base Offense

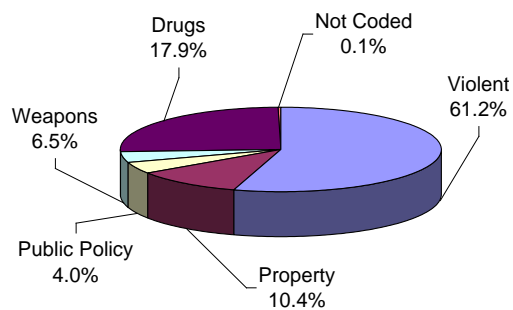
Institution	Total	Violent Offenses	Homicide	Sexual Assault	Assault	Robbery	Kidnap	Other Sex	Other Person	Property	Public Policy	Weapons	Drugs	Not Coded
ADTC	611	608	2	522	0	3	14	58	9	0	1	0	2	0
	100%	100%	0%	85%	0%	0%	2%	9%	1%	0%	0%	0%	0%	0%
Subtotal	15,650	9,810	3,303	1,402	1,347	3,010	247	419	82	1,559	597	977	2,689	18
	100%	63%	21%	9%	9%	19%	2%	3%	1%	10%	4%	6%	17%	0%
Mahan - Female Prison	783	450	202	9	84	125	8	20	2	106	30	19	136	42
	100%	57%	26%	1%	11%	16%	1%	3%	0%	14%	4%	2%	17%	5%
Total Prison Complex	16,433	10,260	3,505	1,411	1,431	3,135	255	439	84	1,665	627	996	2,825	60
	100%	62%	21%	9%	9%	19%	2%	3%	1%	10%	4%	6%	17%	0%

ADTC



Virtually all offenders at ADTC were committed for violent offenses.

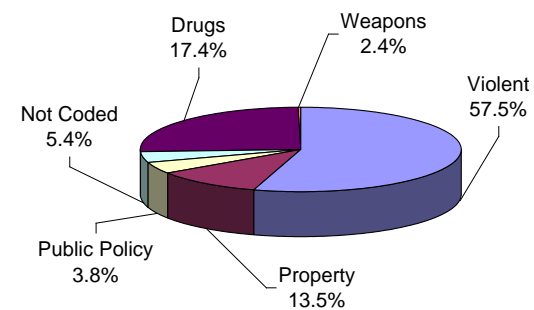
MALE OFFENDERS IN OTHER FACILITIES



Sixty-one percent (61%) of Male Offenders in Other Facilities were convicted of a violent offense.

Eighteen percent (18%) of all Male Offenders in Other Facilities were convicted of drug offenses.

FEMALE OFFENDERS



Violent offenses were the most frequent commitment-offenses at Edna Mahan (57.5%).

Seventeen percent (17%) of female inmates were committed for drug offenses.

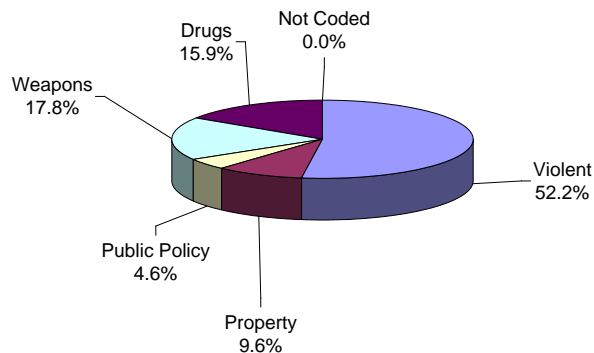
Youth Complex Offenders By Base Offense

Institution	Total	Violent Offenses	Homicide	Sexual Assault	Assault	Robbery	Kidnap	Other Sex	Other Person	Property	Public Policy	Weapons	Drugs	Not Coded
Garden State	1,786	1061	150	88	203	552	12	48	8	138	71	279	237	0
	100%	59%	8%	5%	11%	31%	1%	3%	0%	8%	4%	16%	13%	0%
Mountainview	1,043	405	18	11	120	231	3	19	3	138	53	221	226	0
	100%	39%	2%	1%	12%	22%	0%	2%	0%	13%	5%	21%	22%	0%
Wagner Main	594	333	49	8	86	177	6	3	4	52	24	101	84	0
	100%	56%	8%	1%	14%	30%	1%	1%	1%	9%	4%	17%	14%	0%
Wagner Ad Seg	289	162	23	6	43	85	0	4	1	22	21	55	29	0
	100%	56%	8%	2%	15%	29%	0%	1%	0%	8%	7%	19%	10%	0%
Wagner Minimum Units	161	61	8	0	16	35	1	0	1	20	9	33	38	0
	100%	38%	5%	0%	10%	22%	1%	0%	1%	12%	6%	20%	24%	0%
Wagner Total	1,044	556	80	14	145	297	7	7	6	94	54	189	151	0
	100%	53%	8%	1%	14%	28%	1%	1%	1%	9%	5%	18%	14%	0%
Total Youth Complex	3,873	2,022	248	113	468	1,080	22	74	17	370	178	689	614	0
	100%	52%	6%	3%	12%	28%	1%	2%	0%	10%	5%	18%	16%	0%

Offenders In Halfway Houses, County Jails, and St. Francis By Base Offense

Institution	Total	Violent Offenses	Homicide	Sexual Assault	Assault	Robbery	Kidnap	Other Sex	Other Person	Property	Public Policy	Weapons	Drugs	Not Coded
Central Medical Unit	9	7	2	1	2	2	0	0	0	1	0	0	1	0
	100%	78%	22%	11%	22%	22%	0%	0%	0%	11%	0%	0%	11%	0%
County Jail	109	2	0	0	1	1	0	0	0	2	0	1	0	104
	100%	2%	0%	0%	1%	1%	0%	0%	0%	2%	0%	1%	0%	95%
Halfway House	2,699	602	59	1	140	381	4	14	3	370	121	459	1,138	9
	100%	22%	2%	0%	5%	14%	0%	1%	0%	14%	4%	17%	42%	0%
Total Halfway Houses, County Jails, St. Francis	2,817	611	61	2	143	384	4	14	3	373	121	460	1,139	113
	100%	22%	2%	0%	5%	14%	0%	0%	0%	13%	4%	16%	40%	4%

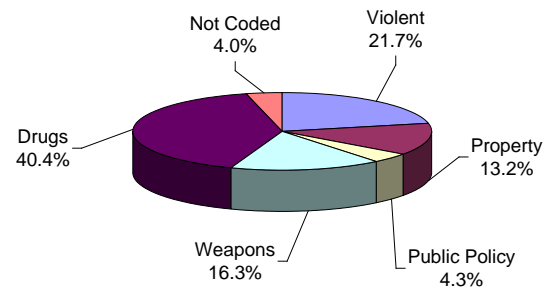
YOUTH COMPLEX



Fifty-two percent (52%) of offenders housed in the youth complex were incarcerated for violent offenses.

Sixteen percent (16%) of offenders housed in the youth complex were incarcerated for drug offenses and 9.6% for property offenses.

HALFWAY HOUSES, COUNTY JAILS, ST. FRANCIS



Offenders housed in county jails and halfway houses are less serious offenders than the Male Offenders in Other Facilities (i.e. 21.7% violent offenders vs. 61.2% Male Offenders in Other Facilities with violent offenses).

Forty percent (40%) of offenders housed in Halfway Houses, County Jails, and St. Francis were committed for drug offenses.

TOTAL MAXIMUM TERM AT ADMISSION

**OFFENDERS IN NEW JERSEY CORRECTIONAL INSTITUTIONS
ON JANUARY 2, 2013, BY TOTAL TERM AT ADMISSION**

Total term at admission is the total maximum term imposed for each offender at the time of commitment from the community or from parole. This includes the aggregate term for those admitted with multiple sentences. Additional sentences received following initial admission are not reflected or included in the data.

OFFENDERS IN NEW JERSEY CORRECTIONAL INSTITUTIONS BY TOTAL TERM AT ADMISSION

Total Term	Total		Male Offenders in Other Facilities		Youth Complex		ADTC		Edna Mahan		Halfway Houses, County Jails, St. Francis	
	#	%	#	%	#	%	#	%	#	%	#	%
TOTAL OFFENDERS	23,123	100%	15,039	100%	3,873	100%	611	100%	783	100%	2,817	100%
1-2 Years	999	4%	736	5%	167	4%	3	0%	38	5%	55	2%
3 Years	3,298	14%	1,722	11%	895	23%	34	6%	147	19%	500	18%
4 Years	2,074	9%	1,181	8%	428	11%	19	3%	90	11%	356	13%
5 Years	4,039	17%	2,127	14%	972	25%	56	9%	128	16%	756	27%
6 Years	1,252	5%	691	5%	267	7%	31	5%	33	4%	230	8%
7 Years	1,349	6%	764	5%	290	7%	59	10%	37	5%	199	7%
8-9 Years	1,433	6%	866	6%	252	7%	68	11%	30	4%	217	8%
10 Years	1,405	6%	901	6%	200	5%	95	16%	46	6%	163	6%
11-14 Years	1,378	6%	998	7%	161	4%	70	11%	39	5%	110	4%
15 Years	699	3%	533	4%	69	2%	37	6%	27	3%	33	1%
16-20 Years	1,261	5%	1,029	7%	82	2%	56	9%	46	6%	48	2%
21+ Years	2,316	10%	2,088	14%	42	1%	80	13%	71	9%	35	1%
Life With Parole	1,154	5%	1,128	8%	0	0%	3	0%	22	3%	1	0%
Life Without Parole	68	0%	68	0%	0	0%	0	0%	0	0%	0	0%
Not Coded	398	2%	207	1%	48	1%	0	0%	29	4%	114	4%

Among New Jersey Adult Correctional Offenders:

- The median term for adult offenders is 6 years.
- Forty-four percent (44%) are serving terms of 1-5 years.
- Seventeen percent (17%) are serving terms of 6-9 years.
- Thirty-five percent (35%) are serving terms of 10 years or more, which includes 1,154 offenders serving life and 68 serving life without parole sentences.
- Two percent (2%) were not coded.

Prison Complex Offenders By Total Term At Admission

Institution	Total	1-2 Years	3 Years	4 Years	5 Years	6 Years	7 Years	8-9 Years	10 Years	11-14 Years	15 Years	16-20 Years	20+ Years	Life With Parole	Life Without Parole	Not Coded
Bayside Main	1,162 100%	79 7%	176 15%	108 9%	227 20%	76 7%	74 6%	108 9%	98 8%	77 7%	24 2%	49 4%	42 4%	11 1%	0 0%	13 1%
Bayside Farm	684 100%	32 5%	112 16%	93 14%	107 16%	35 5%	33 5%	40 6%	42 6%	55 8%	27 4%	44 6%	45 7%	0 0%	0 0%	19 3%
Bayside Ancora	345 100%	15 4%	75 22%	40 12%	62 18%	14 4%	25 7%	30 9%	21 6%	19 6%	16 5%	17 5%	5 1%	0 0%	0 0%	6 2%
Bayside Total	2,191 100%	126 6%	363 17%	241 11%	396 18%	125 6%	132 6%	178 8%	161 7%	151 7%	67 3%	110 5%	92 4%	11 1%	0 0%	38 2%
CRAF Jones Farm	282 100%	30 11%	99 35%	67 24%	44 16%	12 4%	11 4%	3 1%	2 1%	1 0%	0 0%	0 0%	0 0%	0 0%	0 0%	13 5%
CRAF Reception	642 100%	120 19%	173 27%	70 11%	120 19%	26 4%	23 4%	22 3%	11 2%	11 2%	6 1%	3 0%	5 1%	0 0%	0 0%	52 8%
CRAF Total	924 100%	150 16%	272 29%	137 15%	164 18%	38 4%	34 4%	25 3%	13 1%	12 1%	6 1%	3 0%	5 1%	0 0%	0 0%	65 7%
East Jersey Main	1,378 100%	8 1%	14 1%	10 1%	29 2%	14 1%	17 1%	41 3%	75 5%	150 11%	89 6%	258 19%	450 33%	223 16%	0 0%	0 0%
East Jersey Camp	113 100%	2 2%	11 10%	12 11%	14 12%	4 4%	4 4%	10 9%	12 11%	14 12%	12 11%	10 9%	8 7%	0 0%	0 0%	0 0%
East Jersey Total	1,491 100%	10 1%	25 2%	22 1%	43 3%	18 1%	21 1%	51 3%	87 6%	164 11%	101 7%	268 18%	458 31%	223 15%	0 0%	0 0%

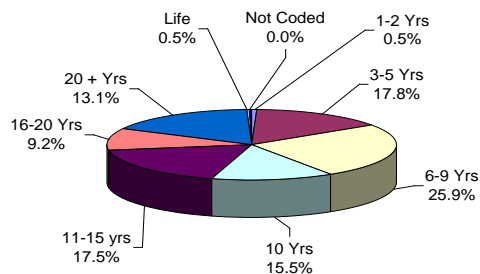
Prison Complex Offenders By Total Term At Admission

Institution	Total	1-2 Years	3 Years	4 Years	5 Years	6 Years	7 Years	8-9 Years	10 Years	11-14 Years	15 Years	16-20 Years	20+ Years	Life With Parole	Life Without Parole	Not Coded
Midstate	685 100%	83 12%	153 22%	97 14%	167 24%	48 7%	51 7%	34 5%	14 2%	12 2%	4 1%	1 0%	4 1%	0 0%	0 0%	17 2%
NJ State Prison	1,860 100%	14 1%	32 2%	32 2%	52 3%	13 1%	25 1%	29 2%	42 2%	36 2%	24 1%	64 3%	816 44%	598 32%	68 4%	15 1%
Northern Main	1,886 100%	58 3%	175 9%	101 5%	238 13%	101 5%	88 5%	111 6%	161 9%	187 10%	89 5%	176 9%	259 14%	128 7%	0 0%	14 1%
Northern Ad Seg Male	536 100%	19 4%	77 14%	52 10%	110 21%	29 5%	34 6%	34 6%	36 7%	47 9%	21 4%	37 7%	31 6%	7 1%	0 0%	2 0%
Northern Total	2,422 100%	77 3%	252 10%	153 6%	348 14%	130 5%	122 5%	145 6%	197 8%	234 10%	110 5%	213 9%	290 12%	135 6%	0 0%	16 1%
Southern	2,042 100%	148 7%	309 15%	255 12%	500 24%	160 8%	138 7%	158 8%	140 7%	89 4%	35 2%	43 2%	23 1%	12 1%	0 0%	32 2%
South Woods	3,424 100%	128 4%	316 9%	244 7%	457 13%	159 5%	241 7%	246 7%	247 7%	300 9%	186 5%	327 10%	400 12%	149 4%	0 0%	24 1%
Subtotal Male Offenders in Other Facilities	15,039 100%	736 5%	1,722 11%	1,181 8%	2,127 14%	691 5%	764 5%	866 6%	901 6%	998 7%	533 4%	1,029 7%	2,088 14%	1,128 8%	68 0%	207 1%

Prison Complex Offenders By Total Term At Admission

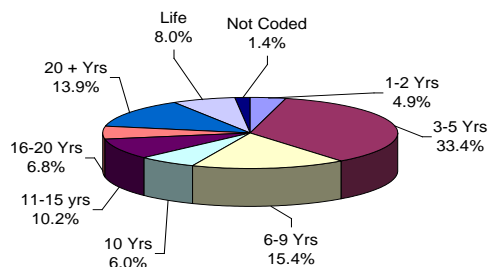
Institution	Total	1-2 Years	3 Years	4 Years	5 Years	6 Years	7 Years	8-9 Years	10 Years	11-14 Years	15 Years	16-20 Years	20+ Years	Life With Parole	Life Without Parole	Not Coded
ADTC	611 100%	3 0%	34 6%	19 3%	56 9%	31 5%	59 10%	68 11%	95 16%	70 11%	37 6%	56 9%	80 13%	3 0%	0 0%	0 0%
SUBTOTAL	15,650 100%	739 5%	1,756 11%	1,200 8%	2,183 14%	722 5%	823 5%	934 6%	996 6%	1,068 7%	570 4%	1,085 7%	2,168 14%	1,131 7%	68 0%	207 1%
Mahan - Female Prison	783 100%	38 5%	147 19%	90 11%	128 16%	33 4%	37 5%	30 4%	46 6%	39 5%	27 3%	46 6%	71 9%	22 3%	0 0%	29 4%
Total Prison Complex	16,433 100%	777 5%	1,903 12%	1,290 8%	2,311 14%	755 5%	860 5%	964 6%	1,042 6%	1,107 7%	597 4%	1,131 7%	2,239 14%	1,153 7%	68 0%	236 1%

ADTC



The median term at ADTC is 10 years.

MALE OFFENDERS IN OTHER FACILITIES

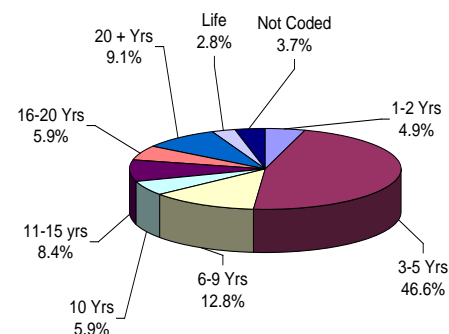


The median term for Male Offenders in Other Facilities is 7 years.

Twenty-nine percent (29%) of all Male Offenders in Other Facilities are serving sentences of 16 years or more.

Eighty-three percent (83%) of all offenders at New Jersey State Prison are serving sentences of 16 years or more, with 598 Life With Parole and 68 Life Without Parole.

FEMALE OFFENDERS



The median term at Edna Mahan is 5 years.

Fifty-one percent (51%) of the female offenders at Edna Mahan Correctional Facility for Women are serving sentences of 5 years or less.

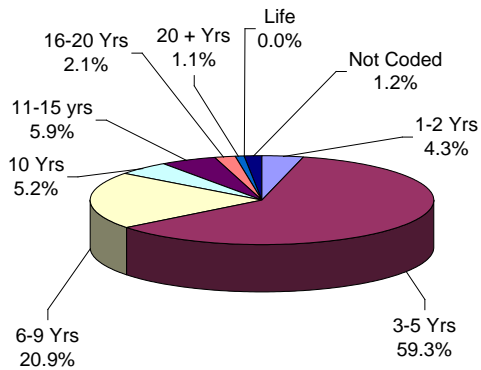
Youth Complex Offenders By Total Term At Admission

Institution	Total	1-2 Years	3 Years	4 Years	5 Years	6 Years	7 Years	8-9 Years	10 Years	11-14 Years	15 Years	16-20 Years	20+ Years	Life With Parole	Life Without Parole	Not Coded
Garden State	1,786 100%	77 4%	342 19%	166 9%	435 24%	125 7%	137 8%	144 8%	119 7%	89 5%	46 3%	60 3%	34 2%	0 0%	0 0%	12 1%
Mountainview	1,043 100%	53 5%	334 32%	142 14%	281 27%	73 7%	66 6%	37 4%	30 3%	10 1%	2 0%	0 0%	0 0%	0 0%	0 0%	15 1%
Wagner Main	594 100%	22 4%	111 19%	67 11%	151 25%	39 7%	48 8%	36 6%	34 6%	42 7%	12 2%	14 2%	5 1%	0 0%	0 0%	13 2%
Wagner Ad Seg	289 100%	8 3%	63 22%	31 11%	72 25%	22 8%	25 9%	25 9%	13 4%	10 3%	7 2%	7 2%	3 1%	0 0%	0 0%	3 1%
Wagner Minimum Units	161 100%	7 4%	45 28%	22 14%	33 20%	8 5%	14 9%	10 6%	4 2%	10 6%	2 1%	1 1%	0 0%	0 0%	0 0%	5 3%
Wagner Total	1,044 100%	37 4%	219 21%	120 11%	256 25%	69 7%	87 8%	71 7%	51 5%	62 6%	21 2%	22 2%	8 1%	0 0%	0 0%	21 2%
Total Youth Complex	3,873 100%	167 4%	895 23%	428 11%	972 25%	267 7%	290 7%	252 7%	200 5%	161 4%	69 2%	82 2%	42 1%	0 0%	0 0%	48 1%

Offenders In Halfway Houses, County Jails, and St. Francis By Total Term At Admission

Institution	Total	1-2 Years	3 Years	4 Years	5 Years	6 Years	7 Years	8-9 Years	10 Years	11-14 Years	15 Years	16-20 Years	20+ Years	Life	Capital	Not Coded
Central Medical Unit	9	0	1	1	1	0	2	0	1	0	0	0	2	1	0	0
	100%	0%	11%	11%	11%	0%	22%	0%	11%	0%	0%	0%	22%	11%	0%	0%
County Jail	109	0	1	0	2	0	0	0	1	0	0	0	0	0	0	105
	100%	0%	1%	0%	2%	0%	0%	0%	1%	0%	0%	0%	0%	0%	0%	96%
Halfway House	2,699	55	498	355	753	230	197	217	161	110	33	48	33	0	0	9
	100%	2%	18%	13%	28%	9%	7%	8%	6%	4%	1%	2%	1%	0%	0%	0%
Total Halfway Houses, County Jails, St. Francis	2,817	55	500	356	756	230	199	217	163	110	33	48	35	1	0	114
	100%	2%	18%	13%	27%	8%	7%	8%	6%	4%	1%	2%	1%	0%	0%	4%

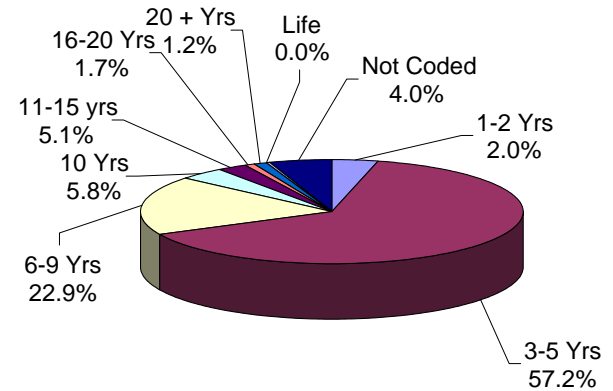
YOUTH COMPLEX



The median youth complex term is 5 years.

No youth complex offenders are currently serving life sentences.

HALFWAY HOUSES, COUNTY JAILS, ST. FRANCIS



The median term for offenders housed in Halfway Houses, County Jails, and St. Francis is 5 years.

Fifty-nine percent (59%) of offenders housed in Halfway Houses, County Jails, and St. Francis are serving terms of 5 years or less.

MANDATORY MINIMUM TERM

**OFFENDERS IN NEW JERSEY CORRECTIONAL INSTITUTIONS
ON JANUARY 2, 2013, BY MANDATORY MINIMUM TERM**

In New Jersey, since 1979, the courts have utilized mandatory minimum sentences. This means that an offender must serve the entire minimum sentence before being eligible for parole consideration. Mandatory minimum terms are not reduced by earned credits (commutation, minimum security, or work).

OFFENDERS IN CORRECTIONAL INSTITUTIONS BY MANDATORY MINIMUM TERM

Mandatory Minimum Term	Total		Male Offenders in Other Facilities		Youth Complex		ADTC		Edna Mahan		Halfway Houses, County Jails, St. Francis	
	#	%	#	%	#	%	#	%	#	%	#	%
TOTAL OFFENDERS	16,842	100%	11,031	100%	2,808	100%	483	100%	479	100%	2,041	100%
<18 Months	855	5%	338	3%	317	11%	0	0%	10	2%	190	9%
18 Months	437	3%	238	2%	80	3%	0	0%	11	2%	108	5%
2 Years	838	5%	456	4%	133	5%	1	0%	21	4%	227	11%
3 Years	2,935	17%	1,444	13%	694	25%	10	2%	64	13%	723	35%
4 Years	1,018	6%	575	5%	179	6%	7	1%	29	6%	228	11%
5 Years	1,781	11%	999	9%	419	15%	44	9%	56	12%	263	13%
6-9 Years	3,273	19%	2,039	18%	701	25%	227	47%	102	21%	204	10%
10 Years	237	1%	181	2%	21	1%	21	4%	5	1%	9	0%
11-14 Years	1,588	9%	1,224	11%	164	6%	87	18%	56	12%	57	3%
15 Years	287	2%	227	2%	17	1%	21	4%	10	2%	12	1%
16-19 Years	953	6%	816	7%	51	2%	32	7%	41	9%	13	1%
20-24 Years	487	3%	438	4%	18	1%	12	2%	17	4%	2	0%
25-29 Years	388	2%	361	3%	9	0%	13	3%	3	1%	2	0%
30 Years	850	5%	805	7%	4	0%	3	1%	35	7%	3	0%
30+ Years	915	5%	890	8%	1	0%	5	1%	19	4%	0	0%

- Seventy-three percent (73%) of all adult offenders have mandatory minimum terms (16,842 out of 23,123).
- The median mandatory minimum term is 5 years.
- Twenty-three percent (23%) of those with mandatory minimum terms have mandatory minimum terms of 15 years or more.

Prison Complex Offenders By Mandatory Minimum Term

Institution	Total	< 18 Months	18 Months	2 Years	3 Years	4 Years	5 Years	6-9 Years	10 Years	11-14 Years	15 Years	16-19 Years	20-24 Years	25-29 Years	30 Years	30+ Years
Bayside Main	783 100%	24 3%	23 3%	43 5%	166 21%	69 9%	132 17%	201 26%	12 2%	54 7%	12 2%	19 2%	12 2%	6 1%	10 1%	0 0%
Bayside Farm	442 100%	21 5%	10 2%	30 7%	71 16%	28 6%	50 11%	86 19%	8 2%	75 17%	14 3%	24 5%	12 3%	0 0%	13 3%	0 0%
Bayside Ancora	223 100%	14 6%	11 5%	16 7%	46 21%	27 12%	34 15%	48 22%	1 0%	12 5%	2 1%	9 4%	2 1%	0 0%	1 0%	0 0%
Bayside Total	1,448 100%	59 4%	44 3%	89 6%	283 20%	124 9%	216 15%	335 23%	21 1%	141 10%	28 2%	52 4%	26 2%	6 0%	24 2%	0 0%
CRAF Jones Farm	77 100%	15 19%	7 9%	26 34%	19 25%	3 4%	7 9%	0 0%	0 0%	0 0%	0 0%	0 0%	0 0%	0 0%	0 0%	0 0%
CRAF Reception	267 100%	50 19%	18 7%	26 10%	75 28%	20 7%	30 11%	34 13%	3 1%	7 3%	1 0%	1 0%	1 0%	1 0%	0 0%	0 0%
CRAF Total	344 100%	65 19%	25 7%	52 15%	94 27%	23 7%	37 11%	34 10%	3 1%	7 2%	1 0%	1 0%	1 0%	1 0%	0 0%	0 0%
East Jersey Main	1,299 100%	3 0%	4 0%	5 0%	33 3%	15 1%	32 2%	156 12%	27 2%	254 20%	55 4%	236 18%	125 10%	74 6%	194 15%	86 7%
East Jersey Camp	91 100%	3 3%	2 2%	6 7%	8 9%	4 4%	16 18%	26 29%	4 4%	17 19%	1 1%	2 2%	2 2%	0 0%	0 0%	0 0%
East Jersey Total	1,390 100%	6 0%	6 0%	11 1%	41 3%	19 1%	48 3%	182 13%	31 2%	271 19%	56 4%	238 17%	127 9%	74 5%	194 14%	86 6%

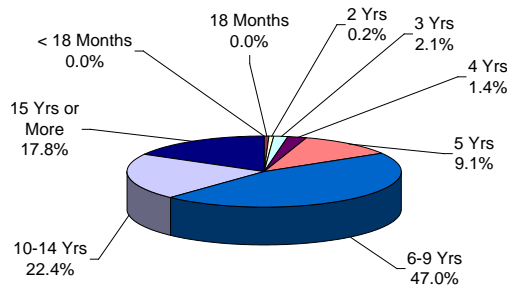
Prison Complex Offenders By Mandatory Minimum Term

Institution	Total	< 18 Months	18 Months	2 Years	3 Years	4 Years	5 Years	6-9 Years	10 Years	11-14 Years	15 Years	16-19 Years	20-24 Years	25-29 Years	30 Years	30+ Years
Midstate	298 100%	12 4%	14 5%	22 7%	102 34%	31 10%	48 16%	54 18%	3 1%	9 3%	0 0%	3 1%	0 0%	0 0%	0 0%	0 0%
NJ State Prison	1,686 100%	18 1%	9 1%	14 1%	31 2%	13 1%	21 1%	87 5%	17 1%	65 4%	27 2%	82 5%	84 5%	165 10%	319 19%	734 44%
Northern Main	1,494 100%	27 2%	25 2%	46 3%	166 11%	63 4%	121 8%	358 24%	32 2%	220 15%	32 2%	146 10%	67 4%	48 3%	117 8%	26 2%
Northern Ad Seg Male	393 100%	15 4%	7 2%	23 6%	70 18%	32 8%	58 15%	80 20%	14 4%	45 11%	8 2%	25 6%	6 2%	1 0%	7 2%	2 1%
Northern Total	1,887 100%	42 2%	32 2%	69 4%	236 13%	95 5%	179 9%	438 23%	46 2%	265 14%	40 2%	171 9%	73 4%	49 3%	124 7%	28 1%
Southern	1,339 100%	81 6%	73 5%	121 9%	376 28%	146 11%	197 15%	230 17%	6 0%	66 5%	8 1%	23 2%	5 0%	2 0%	5 0%	0 0%
South Woods	2,639 100%	55 2%	35 1%	78 3%	281 11%	124 5%	253 10%	679 26%	54 2%	400 15%	67 3%	246 9%	122 5%	64 2%	139 5%	42 2%
Subtotal Male Offenders in Other Facilities	11,031 100%	338 3%	238 2%	456 4%	1,444 13%	575 5%	999 9%	2,039 18%	181 2%	1,224 11%	227 2%	816 7%	438 4%	361 3%	805 7%	890 8%

Prison Complex Offenders By Mandatory Minimum Term

Institution	Total	< 18 Months	18 Months	2 Years	3 Years	4 Years	5 Years	6-9 Years	10 Years	11-14 Years	15 Years	16-19 Years	20-24 Years	25-29 Years	30 Years	30+ Years
ADTC	483 100%	0 0%	0 0%	1 0%	10 2%	7 1%	44 9%	227 47%	21 4%	87 18%	21 4%	32 7%	12 2%	13 3%	3 1%	5 1%
Subtotal	11,514 100%	338 3%	238 2%	457 4%	1,454 13%	582 5%	1,043 9%	2,266 20%	202 2%	1,311 11%	248 2%	848 7%	450 4%	374 3%	808 7%	895 8%
Mahan - Female Prison	479 100%	10 2%	11 2%	21 4%	64 13%	29 6%	56 12%	102 21%	5 1%	56 12%	10 2%	41 9%	17 4%	3 1%	35 7%	19 4%
Total Prison Complex	11,993 100%	348 3%	249 2%	478 4%	1,518 13%	611 5%	1,099 9%	2,368 20%	207 2%	1,367 11%	258 2%	889 7%	467 4%	377 3%	843 7%	914 8%

ADTC

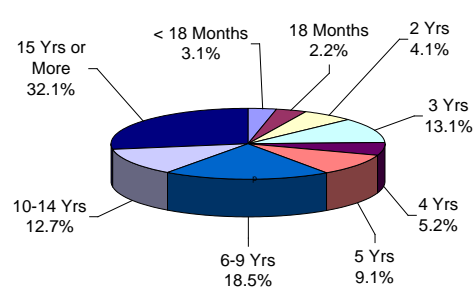


The median mandatory minimum term at ADTC is 8 years 6 months.

Seventy-nine percent (79%) of the ADTC population have mandatory minimum sentences (483 of 611).

Forty percent (40%) have mandatory minimum terms of 10 years or longer.

MALE OFFENDERS IN OTHER FACILITIES

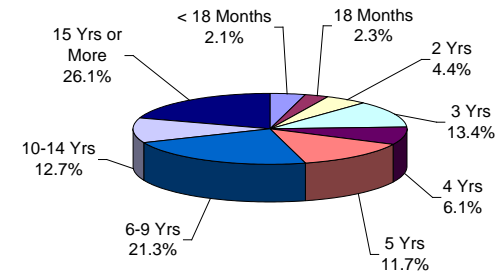


Of the 15,039 Male Offenders in Other Facilities, 73% (11,031) have mandatory minimum terms.

The median mandatory minimum term for Male Offenders in Other Facilities is 6.7 years (ADTC excluded).

Ninety-one percent (91%) of New Jersey State Prison inmates have mandatory minimum terms and 85% percent of those have minimum terms of 15 years or more.

FEMALE OFFENDERS



The median mandatory minimum term at Edna Mahan is 6 years.

At Edna Mahan, 61% of the females housed have minimum terms (479 of 783).

Forty percent (40%) of the females with mandatory minimum terms have terms of 5 years or less.

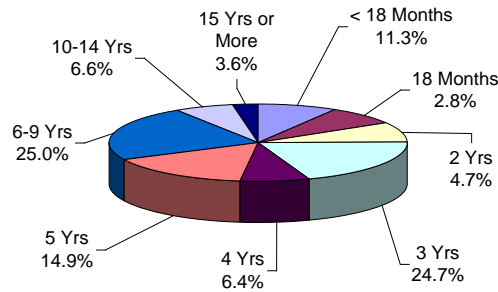
Youth Complex Offenders By Mandatory Minimum Term

Institution	Total	< 18 Months	18 Months	2 Years	3 Years	4 Years	5 Years	6-9 Years	10 Years	11-14 Years	15 Years	16-19 Years	20-24 Years	25-29 Years	30 Years	30+ Years
Garden State	1,368 100%	104 8%	29 2%	51 4%	312 23%	86 6%	215 16%	381 28%	14 1%	101 7%	12 1%	38 3%	14 1%	6 0%	4 0%	1 0%
Mountainview	677 100%	132 19%	24 4%	55 8%	194 29%	49 7%	96 14%	122 18%	0 0%	5 1%	0 0%	0 0%	0 0%	0 0%	0 0%	0 0%
Wagner Main	445 100%	35 8%	15 3%	12 3%	112 25%	25 6%	72 16%	117 26%	4 1%	39 9%	2 0%	7 2%	3 1%	2 0%	0 0%	0 0%
Wagner Ad Seg	214 100%	21 10%	6 3%	9 4%	52 24%	15 7%	28 13%	59 28%	1 0%	13 6%	2 1%	6 3%	1 0%	1 0%	0 0%	0 0%
Wagner Minimum Units	104 100%	25 24%	6 6%	6 6%	24 23%	4 4%	8 8%	22 21%	2 2%	6 6%	1 1%	0 0%	0 0%	0 0%	0 0%	0 0%
Wagner Total	763 100%	81 11%	27 4%	27 4%	188 25%	44 6%	108 14%	198 26%	7 1%	58 8%	5 1%	13 2%	4 1%	3 0%	0 0%	0 0%
Total Youth Complex	2,808 100%	317 11%	80 3%	133 5%	694 25%	179 6%	419 15%	701 25%	21 1%	164 6%	17 1%	51 2%	18 1%	9 0%	4 0%	1 0%

Offenders In Halfway Houses, County Jails, and St. Francis By Mandatory Minimum Term

Institution	Total	< 18 Months	18 Months	2 Years	3 Years	4 Years	5 Years	6-9 Years	10 Years	11-14 Years	15 Years	16-19 Years	20-24 Years	25-29 Years	30 Years	30+ Years
Central Medical Unit	7	0	0	1	2	1	0	1	0	0	0	1	0	1	0	0
	100%	0%	0%	14%	29%	14%	0%	14%	0%	0%	0%	14%	0%	14%	0%	0%
County Jail	2	0	0	0	1	0	1	0	0	0	0	0	0	0	0	0
	100%	0%	0%	0%	50%	0%	50%	0%	0%	0%	0%	0%	0%	0%	0%	0%
Halfway House	2,032	190	108	226	720	227	262	203	9	57	12	12	2	1	3	0
	100%	9%	5%	11%	35%	11%	13%	10%	0%	3%	1%	1%	0%	0%	0%	0%
Total Halfway Houses, County Jails, St. Francis	2,041	190	108	227	723	228	263	204	9	57	12	13	2	2	3	0
	100%	9%	5%	11%	35%	11%	13%	10%	0%	3%	1%	1%	0%	0%	0%	0%

YOUTH COMPLEX

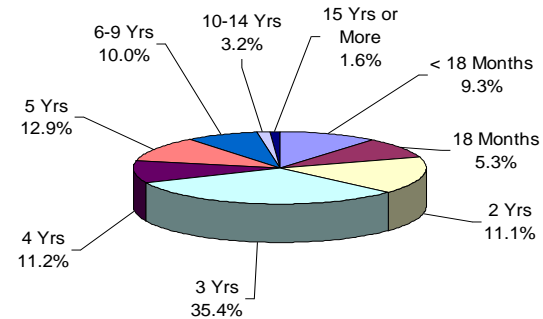


The median mandatory minimum term for youth complex offenders is 4 years.

Among youth complex offenders, 73% have mandatory minimum terms (2,808 of 3,873).

Of these, 65% have mandatory minimum terms of 5 years or less.

HALFWAY HOUSES COUNTY JAILS, ST. FRANCIS



The median mandatory minimum term for inmates in Halfway Houses, County Jails, and St. Francis is 3 years.

Seventy-two percent (72%) of the offenders in Halfway Houses, County Jails, and St. Francis have mandatory minimum terms (2,041 of 2,817).

Of these, 85% have mandatory minimum terms of 5 years or less.

AGE GROUP

**OFFENDERS IN NEW JERSEY CORRECTIONAL INSTITUTIONS
ON JANUARY 2, 2013, BY AGE**

The age of the offender is the chronological age as of January 2, 2013.

OFFENDERS IN CORRECTIONAL INSTITUTIONS BY AGE

Age	Total		Male Offenders in Other Facilities		Youth Complex		ADTC		Edna Mahan		Halfway Houses, County Jails, St. Francis	
	#	%	#	%	#	%	#	%	#	%	#	%
TOTAL OFFENDERS	23,123	100%	15,039	100%	3,873	100%	611	100%	783	100%	2,817	100%
< 17 Years	2	0%	0	0%	2	0%	0	0%	0	0%	0	0%
17 Years	5	0%	0	0%	4	0%	0	0%	1	0%	0	0%
18-20 Years	575	2%	54	0%	451	12%	7	1%	10	1%	53	2%
21-22 Years	1,361	6%	244	2%	923	24%	16	3%	37	5%	141	5%
23-24 Years	1,689	7%	459	3%	979	25%	15	2%	52	7%	184	7%
25-27 Years	2,549	11%	1,078	7%	1,041	27%	29	5%	95	12%	306	11%
28-30 Years	2,466	11%	1,604	11%	426	11%	31	5%	83	11%	322	11%
31-33 Years	2,428	11%	1,964	13%	31	1%	24	4%	81	10%	328	12%
34-36 Years	2,088	9%	1,675	11%	5	0%	54	9%	69	9%	285	10%
37-39 Years	1,811	8%	1,464	10%	1	0%	42	7%	54	7%	250	9%
40-44 Years	2,741	12%	2,211	15%	8	0%	71	12%	102	13%	349	12%
45-49 Years	2,221	10%	1,758	12%	1	0%	92	15%	84	11%	286	10%
50-54 Years	1,552	7%	1,267	8%	1	0%	78	13%	63	8%	143	5%
55-59 Years	799	3%	664	4%	0	0%	47	8%	28	4%	60	2%
60-64 Years	405	2%	329	2%	0	0%	48	8%	11	1%	17	1%
65+ Years	344	1%	268	2%	0	0%	57	9%	13	2%	6	0%
Not Coded	87	0%	0	0%	0	0%	0	0%	0	0%	87	3%

- The median age for adult inmates is 34 years.
- Two percent (2%) of all adult offenders are 20 years of age or younger.
- Thirty-five percent (35%) of all adult offenders are between the ages of 21-30.
- Twenty-eight percent (28%) of all adult offenders are 31 to 39 years of age.
- Thirty-five percent (35%) of all adult offenders are 40 years of age and older.

Prison Complex Offenders By Age

Institution	Total	< 17 Years	17 Years	18-20 Years	21-22 Years	23-24 Years	25-27 Years	28-30 Years	31-33 Years	34-36 Years	37-39 Years	40-44 Years	45-49 Years	50-54 Years	55-59 Years	60-64 Years	65+ Years	Not Coded
Bayside Main	1,162 100%	0 0%	0 0%	1 0%	21 2%	47 4%	113 10%	165 14%	192 17%	145 12%	120 10%	156 13%	97 8%	59 5%	29 2%	13 1%	4 0%	0 0%
Bayside Farm	684 100%	0 0%	0 0%	1 0%	3 0%	12 2%	36 5%	74 11%	68 10%	85 12%	72 11%	124 18%	105 15%	70 10%	24 4%	8 1%	2 0%	0 0%
Bayside Ancora	345 100%	0 0%	0 0%	0 0%	4 1%	5 1%	20 6%	39 11%	38 11%	40 12%	49 14%	62 18%	45 13%	30 9%	10 3%	3 1%	0 0%	0 0%
Bayside Total	2,191 100%	0 0%	0 0%	2 0%	28 1%	64 3%	169 8%	278 13%	298 14%	270 12%	241 11%	342 16%	247 11%	159 7%	63 3%	24 1%	6 0%	0 0%
CRAF Jones Farm	282 100%	0 0%	0 0%	0 0%	0 0%	3 1%	11 4%	38 13%	33 12%	27 10%	27 10%	54 19%	42 15%	31 11%	14 5%	2 1%	0 0%	0 0%
CRAF Reception	642 100%	0 0%	0 0%	31 5%	34 5%	37 6%	71 11%	84 13%	85 13%	55 9%	49 8%	67 10%	59 9%	50 8%	13 2%	3 0%	4 1%	0 0%
CRAF Total	924 100%	0 0%	0 0%	31 3%	34 4%	40 4%	82 9%	122 13%	118 13%	82 9%	76 8%	121 13%	101 11%	81 9%	27 3%	5 1%	4 0%	0 0%
East Jersey Main	1,378 100%	0 0%	0 0%	0 0%	9 1%	21 2%	64 5%	120 9%	156 11%	141 10%	148 11%	205 15%	179 13%	151 11%	90 7%	51 4%	43 3%	0 0%
East Jersey Camp	113 100%	0 0%	0 0%	0 0%	0 0%	2 2%	2 2%	8 7%	25 22%	12 11%	12 11%	21 19%	14 12%	12 11%	1 1%	3 3%	1 1%	0 0%
East Jersey Total	1,491 100%	0 0%	0 0%	0 0%	9 1%	23 2%	66 4%	128 9%	181 12%	153 10%	160 11%	226 15%	193 13%	163 11%	91 6%	54 4%	44 3%	0 0%

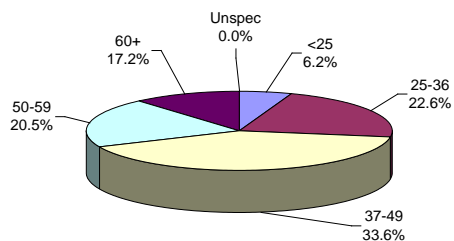
Prison Complex Offenders By Age

Institution	Total	< 17 Years	17 Years	18-20 Years	21-22 Years	23-24 Years	25-27 Years	28-30 Years	31-33 Years	34-36 Years	37-39 Years	40-44 Years	45-49 Years	50-54 Years	55-59 Years	60-64 Years	65+ Years	Not Coded
Midstate	685 100%	0 0%	0 0%	0 0%	3 0%	3 0%	14 2%	45 7%	84 12%	83 12%	73 11%	128 19%	101 15%	82 12%	43 6%	16 2%	10 1%	0 0%
NJ State Prison	1,860 100%	0 0%	0 0%	1 0%	29 2%	71 4%	145 8%	154 8%	179 10%	175 9%	186 10%	293 16%	243 13%	163 9%	95 5%	65 3%	61 3%	0 0%
Northern Main	1,886 100%	0 0%	0 0%	5 0%	31 2%	60 3%	135 7%	172 9%	251 13%	196 10%	178 9%	281 15%	230 12%	169 9%	88 5%	48 3%	42 2%	0 0%
Northern Ad Seg Male	536 100%	0 0%	0 0%	6 1%	30 6%	38 7%	65 12%	76 14%	77 14%	61 11%	51 10%	52 10%	37 7%	30 6%	8 1%	4 1%	1 0%	0 0%
Northern Total	2,422 100%	0 0%	0 0%	11 0%	61 3%	98 4%	200 8%	248 10%	328 14%	257 11%	229 9%	333 14%	267 11%	199 8%	96 4%	52 2%	43 2%	0 0%
Southern	2,042 100%	0 0%	0 0%	0 0%	19 1%	46 2%	149 7%	245 12%	383 19%	265 13%	204 10%	300 15%	215 11%	128 6%	56 3%	21 1%	11 1%	0 0%
South Woods	3,424 100%	0 0%	0 0%	9 0%	61 2%	114 3%	253 7%	384 11%	393 11%	390 11%	295 9%	468 14%	391 11%	292 9%	193 6%	92 3%	89 3%	0 0%
Subtotal Male Offenders in Other Facilities	15,039 100%	0 0%	0 0%	54 0%	244 2%	459 3%	1,078 7%	1,604 11%	1,964 13%	1,675 11%	1,464 10%	2,211 15%	1,758 12%	1,267 8%	664 4%	329 2%	268 2%	0 0%

Prison Complex Offenders By Age

Institution	Total	< 17 Years	17 Years	18-20 Years	21-22 Years	23-24 Years	25-27 Years	28-30 Years	31-33 Years	34-36 Years	37-39 Years	40-44 Years	45-49 Years	50-54 Years	55-59 Years	60-64 Years	65+ Years	Not Coded
ADTC	611	0	0	7	16	15	29	31	24	54	42	71	92	78	47	48	57	0
	100%	0%	0%	1%	3%	2%	5%	5%	4%	9%	7%	12%	15%	13%	8%	8%	9%	0%
Subtotal	15,650	0	0	61	260	474	1,107	1,635	1,988	1,729	1,506	2,282	1,850	1,345	711	377	325	0
	100%	0%	0%	0%	2%	3%	7%	10%	13%	11%	10%	15%	12%	9%	5%	2%	2%	0%
Mahan - Female Prison	783	0	1	10	37	52	95	83	81	69	54	102	84	63	28	11	13	0
	100%	0%	0%	1%	5%	7%	12%	11%	10%	9%	7%	13%	11%	8%	4%	1%	2%	0%
Total Prison Complex	16,433	0	1	71	297	526	1,202	1,718	2,069	1,798	1,560	2,384	1,934	1,408	739	388	338	0
	100%	0%	0%	0%	2%	3%	7%	10%	13%	11%	9%	15%	12%	9%	4%	2%	2%	0%

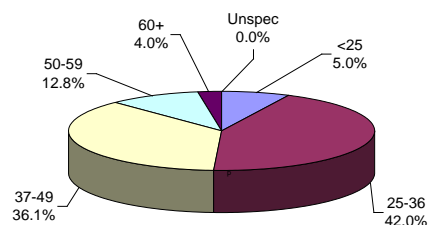
ADTC



The median age at ADTC is 45 years.

Thirty-eight percent (38%) of the ADTC offenders are 50 years of age or older. This may be compared with 16.8% of Male Offenders in Other Facilities and 14.7% of female (Edna Mahan) offenders.

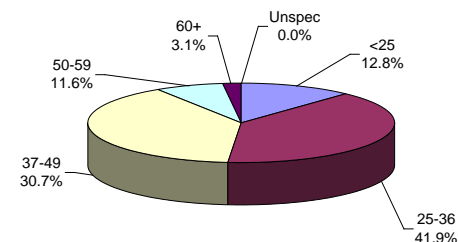
MALE OFFENDERS IN OTHER FACILITIES



The median age for Male Offenders in Other Facilities is 37 years.

Forty-two percent (42%) of Male Offenders in Other Facilities are age 25 to 36 (ADTC excluded).

FEMALE OFFENDERS



The median age for female inmates (Edna Mahan) is 35 years.

Forty-two percent (42%) of the women at Edna Mahan are age 25 to 36.

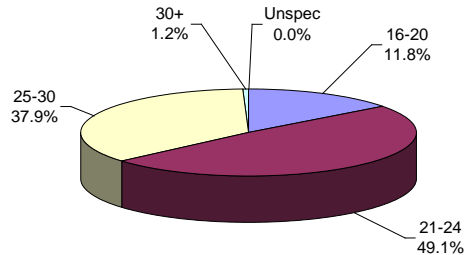
Youth Complex Offenders By Age

Institution	Total	< 17 Years	17 Years	18-20 Years	21-22 Years	23-24 Years	25-27 Years	28-30 Years	31-33 Years	34-36 Years	37-39 Years	40-44 Years	45-49 Years	50-54 Years	55-59 Years	60-64 Years	65+ Years	Not Coded
Garden State	1,786 100%	1 0%	4 0%	189 11%	395 22%	463 26%	505 28%	203 11%	17 1%	1 0%	0 0%	6 0%	1 0%	1 0%	0 0%	0 0%	0 0%	0 0%
Mountainview	1,043 100%	0 0%	0 0%	159 15%	290 28%	246 24%	233 22%	106 10%	4 0%	3 0%	1 0%	1 0%	0 0%	0 0%	0 0%	0 0%	0 0%	0 0%
Wagner Main	594 100%	0 0%	0 0%	58 10%	143 24%	155 26%	166 28%	66 11%	6 1%	0 0%	0 0%	0 0%	0 0%	0 0%	0 0%	0 0%	0 0%	0 0%
Wagner Ad Seg	289 100%	1 0%	0 0%	39 13%	72 25%	78 27%	77 27%	21 7%	0 0%	1 0%	0 0%	0 0%	0 0%	0 0%	0 0%	0 0%	0 0%	0 0%
Wagner Minimum Units	161 100%	0 0%	0 0%	6 4%	23 14%	37 23%	60 37%	30 19%	4 2%	0 0%	0 0%	1 1%	0 0%	0 0%	0 0%	0 0%	0 0%	0 0%
Wagner Total	1,044 100%	1 0%	0 0%	103 10%	238 23%	270 26%	303 29%	117 11%	10 1%	1 0%	0 0%	1 0%	0 0%	0 0%	0 0%	0 0%	0 0%	0 0%
Total Youth Complex	3,873 100%	2 0%	4 0%	451 12%	923 24%	979 25%	1,041 27%	426 11%	31 1%	5 0%	1 0%	8 0%	1 0%	1 0%	0 0%	0 0%	0 0%	0 0%

Offenders In Halfway Houses, County Jails, and St. Francis By Age

Institution	Total	< 17 Years	17 Years	18-20 Years	21-22 Years	23-24 Years	25-27 Years	28-30 Years	31-33 Years	34-36 Years	37-39 Years	40-44 Years	45-49 Years	50-54 Years	55-59 Years	60-64 Years	65+ Years	Not Coded
Central Medical Unit	9	0	0	1	0	0	1	0	0	1	0	0	3	0	2	1	0	0
	100%	0%	0%	11%	0%	0%	11%	0%	0%	11%	0%	0%	33%	0%	22%	11%	0%	0%
County Jail	109	0	0	3	1	2	1	3	4	2	1	3	0	0	2	0	0	87
	100%	0%	0%	3%	1%	2%	1%	3%	4%	2%	1%	3%	0%	0%	2%	0%	0%	80%
Halfway House	2,699	0	0	49	140	182	304	319	324	282	249	346	283	143	56	16	6	0
	100%	0%	0%	2%	5%	7%	11%	12%	12%	10%	9%	13%	10%	5%	2%	1%	0%	0%
Total Halfway Houses, County Jails, St. Francis	2,817	0	0	53	141	184	306	322	328	285	250	349	286	143	60	17	6	87
	100%	0%	0%	2%	5%	7%	11%	11%	12%	10%	9%	12%	10%	5%	2%	1%	0%	3%

YOUTH COMPLEX

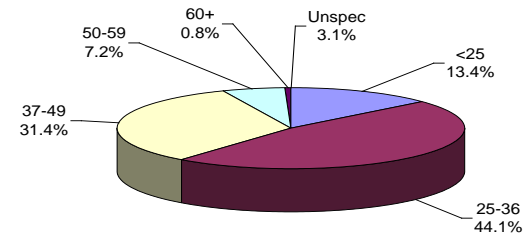


The median age for the youth complex is 24 years.

Eighty-seven percent (87%) of all youth complex inmates are between the ages of 21 and 30.

Sixty-one percent (61%) are less than 25 years of age.

HALFWAY HOUSES, COUNTY JAILS, ST. FRANCIS



The median age for offenders in Halfway Houses, County Jails, and St. Francis is 34 years.

The median age for offenders housed in county jails is 31.5 years; while offenders in halfway houses have a median age of 34 years.

RACE/ETHNIC IDENTIFICATION

**OFFENDERS IN NEW JERSEY CORRECTIONAL INSTITUTIONS
ON JANUARY 2, 2013, BY RACE/ETHNIC IDENTIFICATION**

In these tabulations, a Hispanic is a person of Mexican, Puerto Rican, Cuban, South American or other Spanish culture or origin (Spain or Portugal) regardless of complexion.

OFFENDERS IN CORRECTIONAL INSTITUTIONS BY RACE/ETHNIC IDENTIFICATION

Ethnic Identification	Total		Male Offenders in Other Facilities		Youth Complex		ADTC		Edna Mahan		Halfway Houses, County Jails, St. Francis	
	#	%	#	%	#	%	#	%	#	%	#	%
TOTAL OFFENDERS	23,123	100%	15,039	100%	3,873	100%	611	100%	783	100%	2,817	100%
Black	14,009	61%	9,165	61%	2,501	65%	129	21%	387	49%	1,827	65%
White	5,295	23%	3,324	22%	828	21%	324	53%	277	35%	542	19%
Hispanic	3,600	16%	2,470	16%	523	14%	146	24%	110	14%	351	12%
Asian	121	1%	73	0%	19	0%	12	2%	8	1%	9	0%
American Indian	11	0%	7	0%	2	0%	0	0%	1	0%	1	0%
Other or Not Coded	87	0%	0	0%	0	0%	0	0%	0	0%	87	3%

- Sixty-one (61%) percent of all state correctional institution offenders were Black, 23% were White, and 16% were Hispanic.

Prison Complex Offenders By Race/Ethnic Identification

Institution	Total	Black	White	Hispanic	Asian	American Indian	Other or Not Coded
Bayside Main	1,162 100%	758 65%	210 18%	190 16%	4 0%	0 0%	0 0%
Bayside Farm	684 100%	413 60%	175 26%	95 14%	1 0%	0 0%	0 0%
Bayside Ancora	345 100%	230 67%	66 19%	49 14%	0 0%	0 0%	0 0%
Bayside Total	2,191 100%	1,401 64%	451 21%	334 15%	5 0%	0 0%	0 0%
CRAF Jones Farm	282 100%	136 48%	107 38%	38 13%	1 0%	0 0%	0 0%
CRAF Reception	642 100%	359 56%	186 29%	94 15%	2 0%	1 0%	0 0%
CRAF Total	924 100%	495 54%	293 32%	132 14%	3 0%	1 0%	0 0%
East Jersey Main	1,378 100%	886 64%	230 17%	259 19%	3 0%	0 0%	0 0%
East Jersey Camp	113 100%	79 70%	19 17%	14 12%	1 1%	0 0%	0 0%
East Jersey Total	1,491 100%	965 65%	249 17%	273 18%	4 0%	0 0%	0 0%

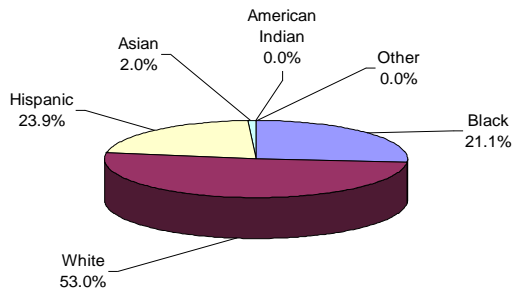
Prison Complex Offenders By Race/Ethnic Identification

Institution	Total	Black	White	Hispanic	Asian	American Indian	Other or Not Coded
Midstate	685 100%	295 43%	265 39%	117 17%	6 1%	2 0%	0 0%
NJ State Prison	1,860 100%	1,224 66%	352 19%	266 14%	17 1%	1 0%	0 0%
Northern Main	1,886 100%	1,197 63%	289 15%	393 21%	7 0%	0 0%	0 0%
Northern Ad Seg Male	536 100%	342 64%	107 20%	85 16%	2 0%	0 0%	0 0%
Northern Total	2,422 100%	1,539 64%	396 16%	478 20%	9 0%	0 0%	0 0%
Southern	2,042 100%	1,279 63%	477 23%	279 14%	7 0%	0 0%	0 0%
South Woods	3,424 100%	1,967 57%	841 25%	591 17%	22 1%	3 0%	0 0%
Subtotal Male Offenders in Other Facilities	15,039 100%	9,165 61%	3,324 22%	2,470 16%	73 0%	7 0%	0 0%

Prison Complex Offenders By Race/Ethnic Identification

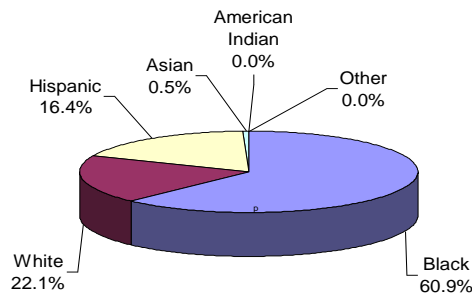
Institution	Total	Black	White	Hispanic	Asian	American Indian	Other or Not Coded
ADTC	611 100%	129 21%	324 53%	146 24%	12 2%	0 0%	0 0%
Subtotal	15,650 100%	9,294 59%	3,648 23%	2,616 17%	85 1%	7 0%	0 0%
Mahan - Female Prison	783 100%	387 49%	277 35%	110 14%	8 1%	1 0%	0 0%
Total Prison Complex	16,433 100%	9,681 59%	3,925 24%	2,726 17%	93 1%	8 0%	0 0%

ADTC



White offenders comprised 53% of the offenders at ADTC.

MALE OFFENDERS IN OTHER FACILITIES

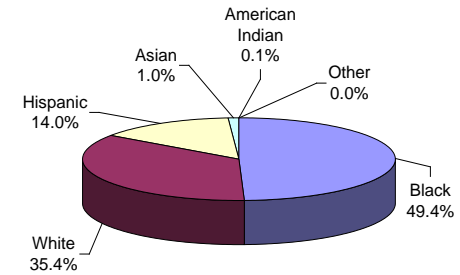


The largest proportion of Black male offenders in a major facility was at New Jersey State Prison (66%).

The largest proportion of White male offenders at a major facility was at Midstate Correctional Facility (39%), ADTC excluded.

The largest proportion of Hispanic male offenders at a major facility was at Northern (20%), (ADTC excluded).

FEMALE OFFENDERS



Black offenders comprised 49.4% of the population at Edna Mahan. This may be compared with Black offenders comprising 60.9% of the Male Offenders in Other Facilities.

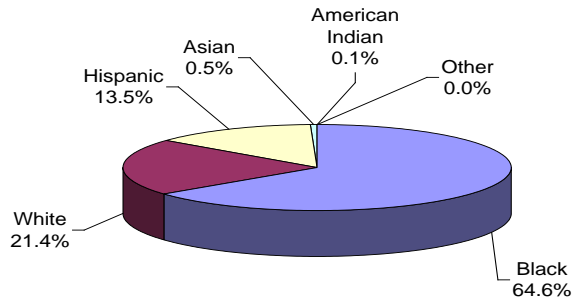
Youth Complex Offenders By Race/Ethnic Identification

Institution	Total	Black	White	Hispanic	Asian	American Indian	Other or Not Coded
Garden State	1,786 100%	1,188 67%	339 19%	247 14%	12 1%	0 0%	0 0%
Mountainview	1,043 100%	597 57%	313 30%	125 12%	7 1%	1 0%	0 0%
Wagner Main	594 100%	407 69%	93 16%	94 16%	0 0%	0 0%	0 0%
Wagner Ad Seg	289 100%	199 69%	47 16%	43 15%	0 0%	0 0%	0 0%
Wagner Minimum Units	161 100%	110 68%	36 22%	14 9%	0 0%	1 1%	0 0%
Wagner Total	1,044 100%	716 69%	176 17%	151 14%	0 0%	1 0%	0 0%
Total Youth Complex	3,873 100%	2,501 65%	828 21%	523 14%	19 0%	2 0%	0 0%

Offenders In Halfway Houses, County Jails, and St. Francis By Race/Ethnic Identification

Institution	Total	Black	White	Hispanic	Asian	American Indian	Other or Not Coded
Central Medical Unit	9 100%	5 56%	4 44%	0 0%	0 0%	0 0%	0 0%
County Jail	109 100%	10 9%	10 9%	2 2%	0 0%	0 0%	87 80%
Halfway House	2,699 100%	1,812 67%	528 20%	349 13%	9 0%	1 0%	0 0%
Total Halfway Houses, County Jails, St. Francis	2,817 100%	1,827 65%	542 19%	351 12%	9 0%	1 0%	87 3%

YOUTH COMPLEX

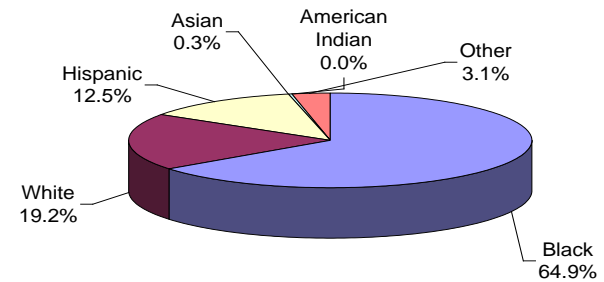


The largest proportion of Black offenders in the youth complex facilities was housed at Wagner (69%).

The largest proportion of White offenders in the youth complex facilities was housed at Mountainview (30%).

The largest proportion of Hispanic offenders in the youth complex facilities was housed both at Wagner and Garden State (14%).

HALFWAY HOUSES, COUNTY JAILS, ST. FRANCIS



Race and ethnicity for inmates assigned to Halfway Houses, County Jails, and St. Francis was roughly equivalent to that for the total adult inmate population.

COUNTY OF COMMITMENT

**OFFENDERS IN NEW JERSEY CORRECTIONAL INSTITUTIONS
ON JANUARY 2, 2013, BY COUNTY OF COMMITMENT**

OFFENDERS IN NEW JERSEY CORRECTIONAL INSTITUTIONS BY COUNTY OF COMMITMENT

County of Commitment	Total		Male Offenders in Other Facilities		Youth Complex		ADTC		Edna Mahan		Halfway Houses, County Jails, St. Francis	
	#	%	#	%	#	%	#	%	#	%	#	%
TOTAL OFFENDERS	23,123	100%	15,039	100%	3,873	100%	611	100%	783	100%	2,817	100%
Atlantic	1,734	7%	1,128	8%	259	7%	35	6%	74	9%	238	8%
Bergen	914	4%	596	4%	126	3%	46	8%	34	4%	112	4%
Burlington	744	3%	482	3%	122	3%	28	5%	29	4%	83	3%
Camden	2,642	11%	1,678	11%	485	13%	56	9%	89	11%	334	12%
Cape May	410	2%	274	2%	74	2%	12	2%	15	2%	35	1%
Cumberland	609	3%	419	3%	91	2%	18	3%	17	2%	64	2%
Essex	3,358	15%	2,369	16%	535	14%	39	6%	74	9%	341	12%
Gloucester	440	2%	275	2%	80	2%	17	3%	20	3%	48	2%
Hudson	1,863	8%	1,200	8%	304	8%	29	5%	67	9%	263	9%
Hunterdon	115	0%	71	0%	14	0%	5	1%	9	1%	16	1%
Mercer	1,221	5%	776	5%	234	6%	21	3%	48	6%	142	5%
Middlesex	1,596	7%	1,026	7%	288	7%	61	10%	61	8%	160	6%
Monmouth	1,250	5%	797	5%	223	6%	38	6%	48	6%	144	5%
Morris	388	2%	262	2%	52	1%	24	4%	13	2%	37	1%
Ocean	862	4%	552	4%	124	3%	46	8%	37	5%	103	4%
Passaic	1,717	7%	1,073	7%	326	8%	58	9%	33	4%	227	8%
Salem	239	1%	147	1%	48	1%	11	2%	6	1%	27	1%
Somerset	427	2%	273	2%	72	2%	6	1%	19	2%	57	2%
Sussex	153	1%	88	1%	24	1%	7	1%	15	2%	19	1%
Union	2,048	9%	1,351	9%	356	9%	35	6%	59	8%	247	9%
Warren	165	1%	94	1%	32	1%	14	2%	7	1%	18	1%
Not Coded	228	1%	108	1%	4	0%	5	1%	9	1%	102	4%

- Essex County has the highest percentage of commitments among Male Offenders in Other Facilities (16%), and the youth complex (14%).
- Camden County has the highest percentage of commitments at Edna Mahan (11%).
- Middlesex County has the highest percentage of commitments at ADTC (10%).
- Camden and Essex have the highest percentage of commitments (12%) at Halfway Houses, County Jails and Saint Francis Hospital.
- Two counties, Essex and Camden, combine to comprise roughly a fourth of total DOC commitments.

Prison Complex Offenders By County Of Commitment

Institution	Total	Atl	Ber	Burl	Cam	Cape May	Cum	Ess	Glou	Hud	Hunt	Mer	Mid	Mon	Mor	Oc	Pas	Sal	Som	Sus	Un	War	Not Coded
Bayside Main	1,162 100%	93 8%	35 3%	36 3%	153 13%	30 3%	41 4%	176 15%	21 2%	96 8%	6 1%	59 5%	79 7%	58 5%	19 2%	44 4%	71 6%	13 1%	18 2%	7 1%	100 9%	6 1%	1 0%
Bayside Farm	684 100%	64 9%	22 3%	22 3%	93 14%	11 2%	24 4%	121 18%	9 1%	53 8%	3 0%	27 4%	32 5%	28 4%	15 2%	26 4%	53 8%	11 2%	9 1%	3 0%	53 8%	4 1%	1 0%
Bayside Ancora	345 100%	31 9%	5 1%	6 2%	38 11%	8 2%	16 5%	46 13%	3 1%	34 10%	4 1%	27 8%	18 5%	15 4%	12 3%	14 4%	21 6%	5 1%	11 3%	0 0%	29 8%	2 1%	0 0%
Bayside Total	2,191 100%	188 9%	62 3%	64 3%	284 13%	49 2%	81 4%	343 16%	33 2%	183 8%	13 1%	113 5%	129 6%	101 5%	46 2%	84 4%	145 7%	29 1%	38 2%	10 0%	182 8%	12 1%	2 0%
CRAF Jones Farm	282 100%	24 9%	12 4%	5 2%	31 11%	7 2%	3 1%	27 10%	13 5%	19 7%	5 2%	6 2%	31 11%	16 6%	5 2%	11 4%	19 7%	1 0%	11 4%	1 0%	32 11%	3 1%	0 0%
CRAF Reception	642 100%	40 6%	32 5%	27 4%	76 12%	8 1%	15 2%	70 11%	14 2%	52 8%	2 0%	34 5%	48 7%	44 7%	14 2%	17 3%	38 6%	7 1%	12 2%	9 1%	64 10%	14 2%	5 1%
CRAF Total	924 100%	64 7%	44 5%	32 3%	107 12%	15 2%	18 2%	97 10%	27 3%	71 8%	7 1%	40 4%	79 9%	60 6%	19 2%	28 3%	57 6%	8 1%	23 2%	10 1%	96 10%	17 2%	5 1%
East Jersey Main	1,378 100%	60 4%	58 4%	34 2%	104 8%	9 1%	17 1%	324 24%	15 1%	113 8%	5 0%	73 5%	90 7%	85 6%	26 2%	38 3%	114 8%	2 0%	29 2%	9 1%	153 11%	6 0%	14 1%
East Jersey Camp	113 100%	5 4%	4 4%	0 0%	6 5%	1 1%	2 2%	18 16%	0 0%	14 12%	0 0%	3 3%	10 9%	14 12%	3 3%	6 5%	7 6%	0 0%	5 4%	0 0%	14 12%	1 1%	0 0%
East Jersey Total	1,491 100%	65 4%	62 4%	34 2%	110 7%	10 1%	19 1%	342 23%	15 1%	127 9%	5 0%	76 5%	100 7%	99 7%	29 2%	44 3%	121 8%	2 0%	34 2%	9 1%	167 11%	7 0%	14 1%

Prison Complex Offenders By County Of Commitment

Institution	Total	Atl	Ber	Burl	Cam	Cape May	Cum	Ess	Glou	Hud	Hunt	Mer	Mid	Mon	Mor	Oc	Pas	Sal	Som	Sus	Un	War	Not Coded
Midstate	685 100%	48 7%	43 6%	38 6%	63 9%	9 1%	12 2%	48 7%	17 2%	56 8%	7 1%	47 7%	63 9%	47 7%	15 2%	38 6%	44 6%	6 1%	14 2%	2 0%	59 9%	9 1%	0 0%
NJ State Prison	1,860 100%	125 7%	98 5%	67 4%	169 9%	22 1%	54 3%	351 19%	13 1%	121 7%	2 0%	119 6%	126 7%	89 5%	30 2%	82 4%	112 6%	12 1%	22 1%	11 1%	153 8%	9 0%	73 4%
Northern Main	1,886 100%	83 4%	102 5%	35 2%	134 7%	17 1%	35 2%	393 21%	12 1%	198 10%	7 0%	89 5%	156 8%	92 5%	37 2%	43 2%	190 10%	6 0%	42 2%	7 0%	196 10%	7 0%	5 0%
Northern Ad Seg Male	536 100%	41 8%	14 3%	10 2%	87 16%	8 1%	17 3%	99 18%	4 1%	55 10%	4 1%	29 5%	26 5%	30 6%	5 1%	18 3%	36 7%	6 1%	9 2%	1 0%	33 6%	4 1%	0 0%
Northern Total	2,422 100%	124 5%	116 5%	45 2%	221 9%	25 1%	52 2%	492 20%	16 1%	253 10%	11 0%	118 5%	182 8%	122 5%	42 2%	61 3%	226 9%	12 0%	51 2%	8 0%	229 9%	11 0%	5 0%
Southern	2,042 100%	211 10%	56 3%	74 4%	238 12%	59 3%	63 3%	270 13%	56 3%	166 8%	8 0%	89 4%	137 7%	100 5%	28 1%	70 3%	149 7%	26 1%	27 1%	13 1%	189 9%	13 1%	0 0%
South Woods	3,424 100%	303 9%	115 3%	128 4%	486 14%	85 2%	120 4%	426 12%	98 3%	223 7%	18 1%	174 5%	210 6%	179 5%	53 2%	145 4%	219 6%	52 2%	64 2%	25 1%	276 8%	16 0%	9 0%
Subtotal Male Offenders in Other Facilities	15,039 100%	1,128 8%	596 4%	482 3%	1,678 11%	274 2%	419 3%	2,369 16%	275 2%	1,200 8%	71 0%	776 5%	1,026 7%	797 5%	262 2%	552 4%	1,073 7%	147 1%	273 2%	88 1%	1,351 9%	94 1%	108 1%

Prison Complex Offenders By County Of Commitment

Institution	Total	Atl	Ber	Burl	Cam	Cape May	Cum	Ess	Glou	Hud	Hunt	Mer	Mid	Mon	Mor	Oc	Pas	Sal	Som	Sus	Un	War	Not Coded
ADTC	611 100%	35 6%	46 8%	28 5%	56 9%	12 2%	18 3%	39 6%	17 3%	29 5%	5 1%	21 3%	61 10%	38 6%	24 4%	46 8%	58 9%	11 2%	6 1%	7 1%	35 6%	14 2%	5 1%
Subtotal	15,650 100%	1,163 7%	642 4%	510 3%	1,734 11%	286 2%	437 3%	2,408 15%	292 2%	1,229 8%	76 0%	797 5%	1,087 7%	835 5%	286 2%	598 4%	1,131 7%	158 1%	279 2%	95 1%	1,386 9%	108 1%	113 1%
Mahan - Female Prison	783 100%	74 9%	34 4%	29 4%	89 11%	15 2%	17 2%	74 9%	20 3%	67 9%	9 1%	48 6%	61 8%	48 6%	13 2%	37 5%	33 4%	6 1%	19 2%	15 2%	59 8%	7 1%	9 1%
Total Prison Complex	16,433 100%	1,237 8%	676 4%	539 3%	1,823 11%	301 2%	454 3%	2,482 15%	312 2%	1,296 8%	85 1%	845 5%	1148 7%	883 5%	299 2%	635 4%	1,164 7%	164 1%	298 2%	110 1%	1,445 9%	115 1%	122 1%

Youth Complex Offenders By County Of Commitment

Institution	Total	Atl	Ber	Burl	Cam	Cape May	Cum	Ess	Glou	Hud	Hunt	Mer	Mid	Mon	Mor	Oc	Pas	Sal	Som	Sus	Un	War	Not Coded
Garden State	1,786 100%	140 8%	54 3%	60 3%	247 14%	36 2%	48 3%	215 12%	35 2%	137 8%	5 0%	131 7%	129 7%	104 6%	17 1%	44 2%	133 7%	23 1%	32 2%	8 0%	172 10%	14 1%	2 0%
Mountainview	1,043 100%	53 5%	40 4%	31 3%	98 9%	20 2%	11 1%	158 15%	19 2%	88 8%	6 1%	40 4%	92 9%	67 6%	21 2%	33 3%	105 10%	10 1%	28 3%	12 1%	100 10%	10 1%	1 0%
Wagner Main	594 100%	36 6%	23 4%	14 2%	76 13%	11 2%	17 3%	97 16%	15 3%	35 6%	2 0%	37 6%	32 5%	36 6%	10 2%	24 4%	55 9%	5 1%	4 1%	3 1%	58 10%	4 1%	0 0%
Wagner Ad Seg	289 100%	20 7%	7 2%	10 3%	45 16%	4 1%	11 4%	48 17%	5 2%	25 9%	1 0%	14 5%	22 8%	10 3%	3 1%	15 5%	17 6%	6 2%	5 2%	1 0%	16 6%	3 1%	1 0%
Wagner Minimum Units	161 100%	10 6%	2 1%	7 4%	19 12%	3 2%	4 2%	17 11%	6 4%	19 12%	0 0%	12 7%	13 8%	6 4%	1 1%	8 5%	16 10%	4 2%	3 2%	0 0%	10 6%	1 1%	0 0%
Wagner Total	1,044 100%	66 6%	32 3%	31 3%	140 13%	18 2%	32 3%	162 16%	26 2%	79 8%	3 0%	63 6%	67 6%	52 5%	14 1%	47 5%	88 8%	15 1%	12 1%	4 0%	84 8%	8 1%	1 0%
Total Youth Complex	3,873 100%	259 7%	58 1%	34 1%	104 3%	9 0%	17 0%	324 8%	15 0%	113 3%	5 0%	73 2%	90 2%	85 2%	26 1%	38 1%	114 3%	2 0%	29 1%	9 0%	153 4%	6 0%	14 0%

Offenders In Halfway Houses, County Jails, and St. Francis By County Of Commitment

Institution	Total	Atl	Ber	Burl	Cam	Cape May	Cum	Ess	Glou	Hud	Hunt	Mer	Mid	Mon	Mor	Oc	Pas	Sal	Som	Sus	Un	War	Not Coded
Central Medical Unit	9 100%	0 0%	1 11%	1 11%	1 11%	0 0%	1 11%	0 0%	0 0%	1 11%	0 0%	0 0%	1 11%	1 11%	0 0%	1 11%	0 0%	0 0%	1 11%	0 0%	0 0%	0 0%	0 0%
County Jail	109 100%	0 0%	0 0%	1 1%	1 1%	0 0%	0 0%	3 3%	0 0%	1 1%	0 0%	2 2%	0 0%	0 0%	0 0%	0 0%	0 0%	0 0%	0 0%	0 0%	1 1%	0 0%	100 92%
Halfway House	2,699 100%	238 9%	111 4%	81 3%	332 12%	35 1%	63 2%	338 13%	48 2%	261 10%	16 1%	140 5%	159 6%	143 5%	37 1%	102 4%	227 8%	27 1%	56 2%	19 1%	246 9%	18 1%	2 0%
Total Halfway Houses, County Jails, St. Francis	2,817 100%	238 8%	112 4%	83 3%	334 12%	35 1%	64 2%	341 12%	48 2%	263 9%	16 1%	142 5%	160 6%	144 5%	37 1%	103 4%	227 8%	27 1%	57 2%	19 1%	247 9%	18 1%	102 4%